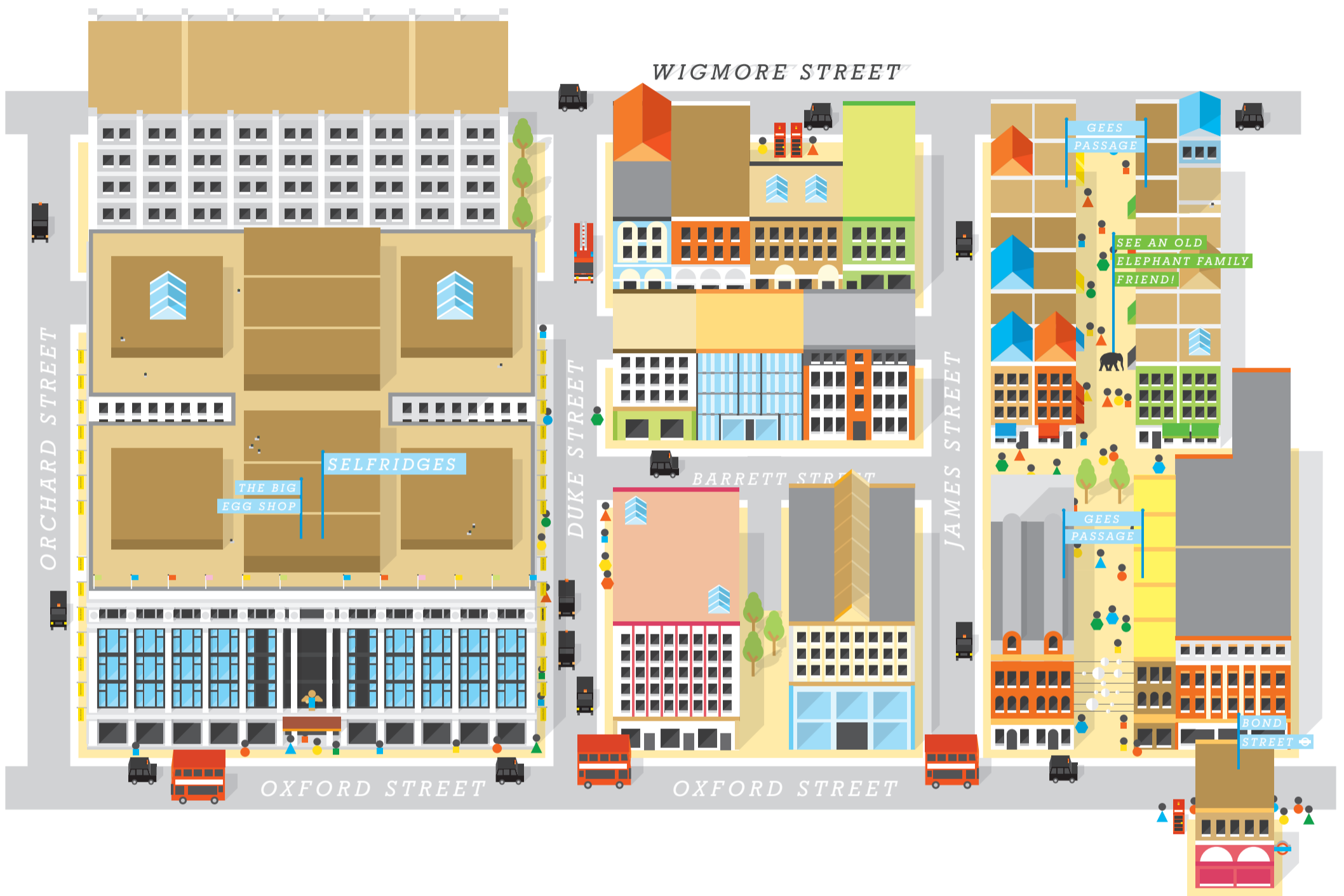
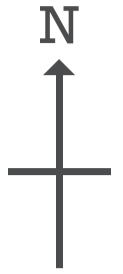


# Egg Zone 1: St Christopher's Place



## Map information

### Welcome to St Christopher's Place!

There are **14 eggs** in this zone.  
How many can you find?

### Getting scrambled? Here are some clues.

- Selfridges is the place to go for an amazing shopping experience – but now it's also the place to go for eggs! There's eight to find in this most eggsclusive of department stores, so get searching!
- As you walk round St. Christopher's place, make sure you search high and low – as there's a few eggs you'll need to look up to find!

Having trouble finding all the eggs?  
Have a cheeky look at our Google map:  
[www.thebigegg hunt.co.uk/cheatsheet](http://www.thebigegg hunt.co.uk/cheatsheet)

Don't worry - we won't tell anyone!

🚇 Nearest station: **Bond Street**

### Happy hunting!

**Remember to Text the Keyword at every egg you find for the chance to win The Diamond Jubilee Egg (valued at over £100,000!).**

Every text message is one entry and your first text will count you to our **Guinness World Record** attempt!  
All proceeds go to Elephant Family and Action for Children.

## Eggs in this zone:

● Outdoor ● Indoor

- |  |  |   |
|--|--|---|
| ● 29: MIA<br>Eggstastic Eggstasy<br>Gees Court                               | ● 67: Simon Drew<br>No Placenta<br>St Christopher's Place      | ● 144: Selfridges<br>SELF EGGSPRESSION<br>Selfridges        |
| ● 38: Suzie Turner<br>What came first, the chicken or the egg?<br>Selfridges | ● 80: Joanne Holbrook<br>The Alpha Egg of London<br>Selfridges | ● 146: Alton Towers<br>Nemesis Sub-Terra<br>Gees Court      |
| ● 44: Physical Pixels<br>Robi & Walt<br>Selfridges                           | ● 90: Titus Roemer<br>The Social Egg<br>Selfridges             | ● 162: Milo Tchais<br>Seasonal Egg<br>St Christophers Place |
| ● 45: Physical Pixels<br>Walt & Robi<br>Selfridges                           | ● 97: Rob Ryan<br>Selfridges<br>The Birds Promise              | ● 195: Sebastian Wrong<br>Eggit<br>Christophers Place       |
| ● 58: Deniz Balabaner<br>The Happy End of Nature<br>St Christopher's Place   | ● 99: Antony Micallef<br>Little Boy<br>Selfridges              |   |



**ELEPHANT FAMILY**

**action for children**

Map design by **made in fallon**

Please note: This map is just a fun guide - the buildings aren't to scale and we haven't included every street.